

**MELIN & ASSOCIATES  
ARCHITECTS, P.C.**  
3570 East Yale Avenue  
Denver, CO 80222  
Phone: 303.981.2942  
Fax: 303.759.1889

**OWNER & ASSOCIATED AGENCY, INC.**

**CONSULTANTS**

**STRUCTURAL ENGINEER**

Structural Design Group  
12130 West Bayview, Suite 102  
Lakewood, CO 80228

**MECHANICAL ENGINEER**

Given & Associates, Inc.  
795 South Xenon Ct  
Lakewood, CO 80120

**ELECTRICAL ENGINEER**

10499 Bradford Rd #102  
Lithium, CO 80127

**MECHANICAL ENGINEER**

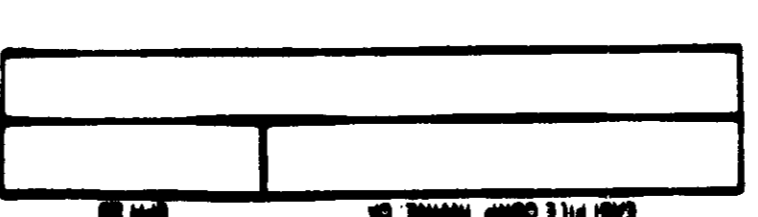
303.987.2304 Fax  
Contact: Clarence Barndt

**MECHANICAL ENGINEER**

303.504.4885  
Contact: Joe Sirochinski P.E.

**MECHANICAL ENGINEER**

303.716.1272 Fax  
Contact: Jeff A. Given P.E.

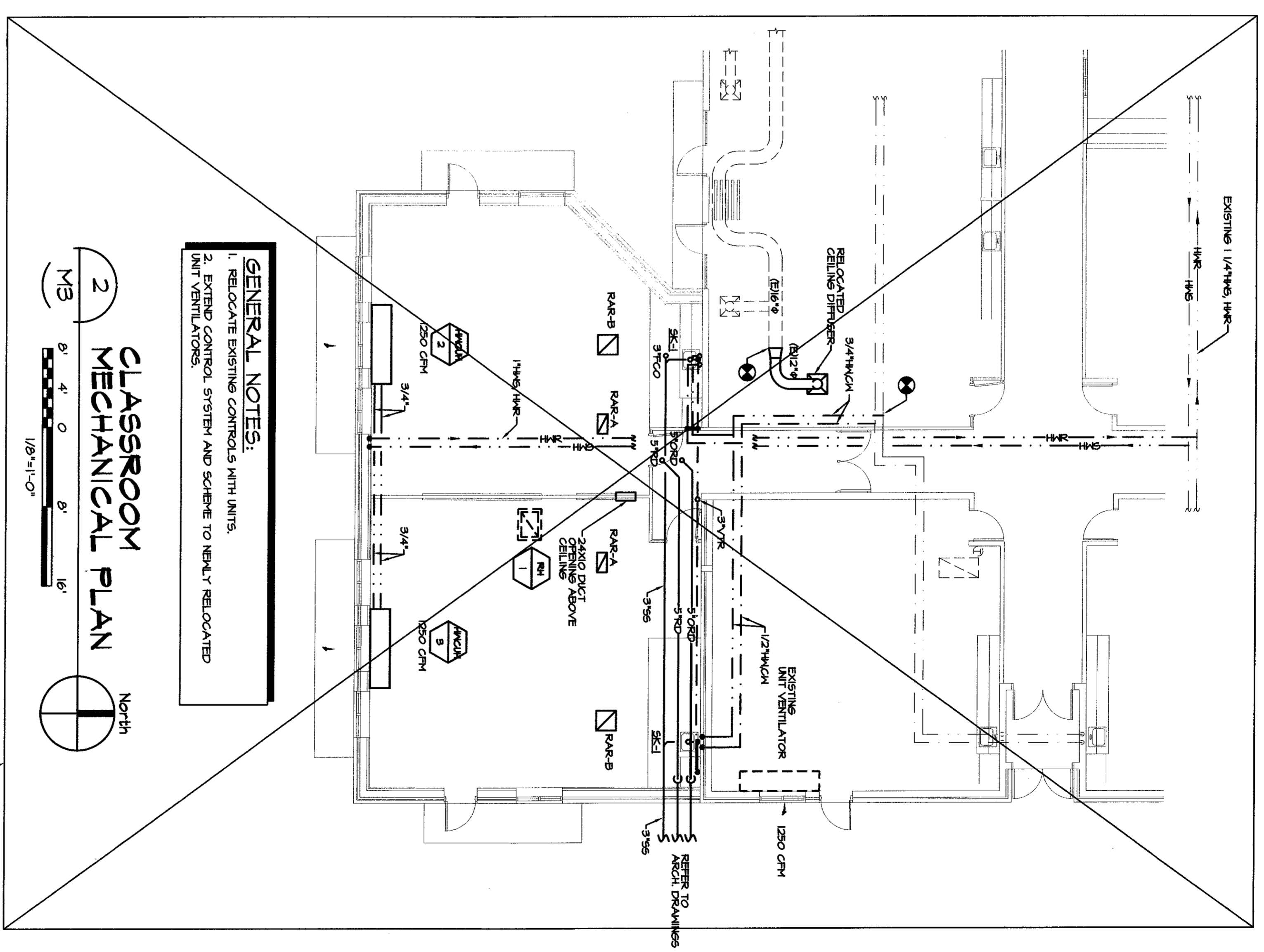


**PROJECT TITLE:**  
Classroom Addition &  
Cafeteria Renovation  
for  
Cache La Poudre  
Elementary School  
Poudre School District

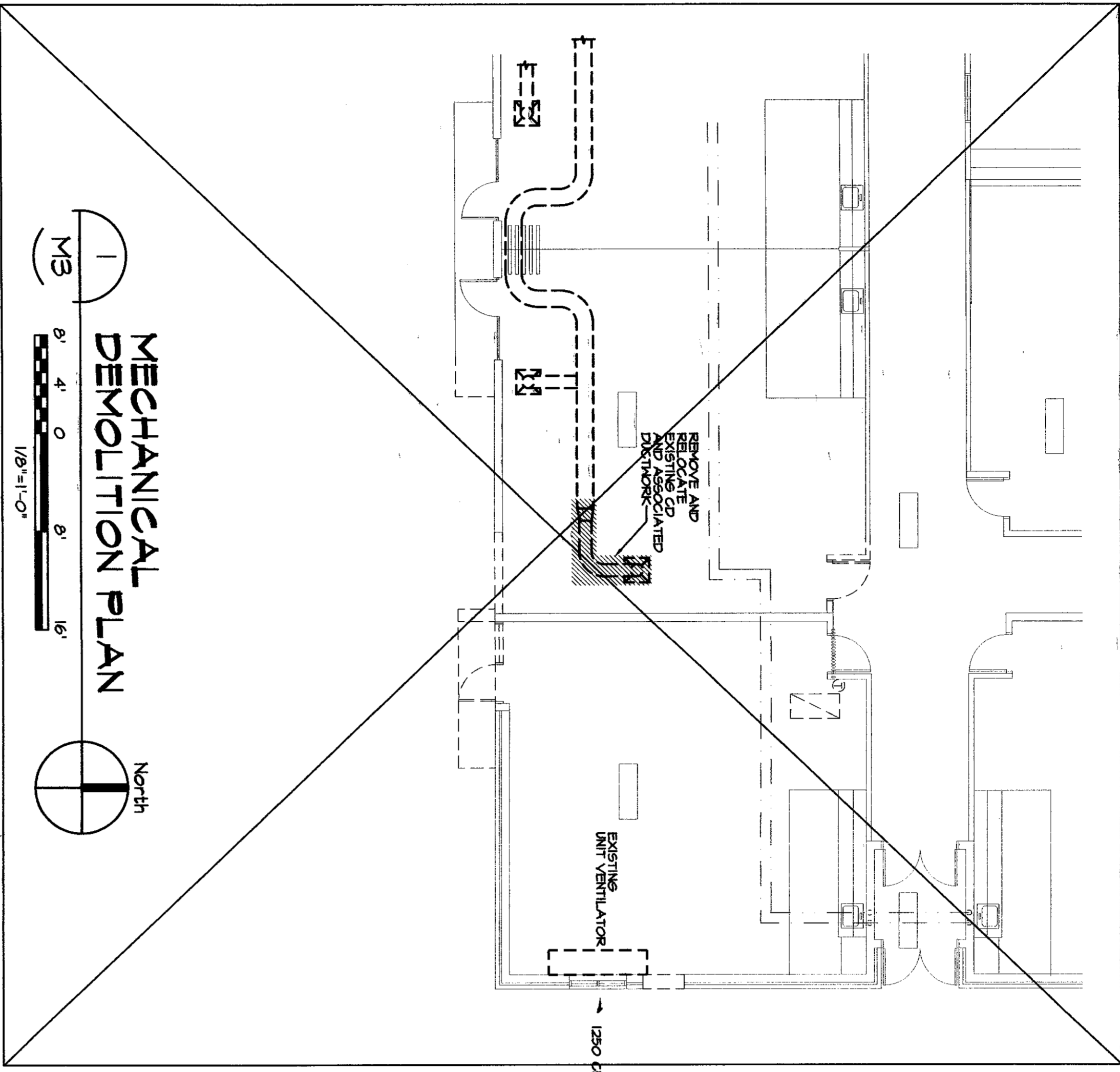
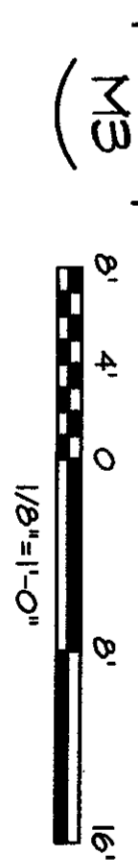
ISSUED	REVISIONS
D.D.'s	04-07-06
95% CD's	05-01-06
100% CD's	05-08-06
RECORD DOCUMENTS	06-08-07

TITLE
CLASSROOM MECHANICAL PLAN

**M-3**  
SHEET M-3 OF 24



**2**  
**CLASSROOM**  
**MECHANICAL PLAN**



**1**  
**MECHANICAL**  
**DEMOLITION PLAN**

